

Call for Participants!

Free Japanese On-demand Lessons

OPJLC

2025 Spring



Self-study

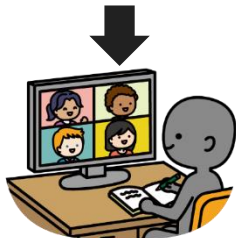
× Online schooling

You can study Japanese using Moodle and participate in weekly schooling sessions to use Japanese!



〈 Self-study using Moodle 〉

- You can use the contents as many times as you want
- You can study at your own pace
- Contents are free
- Contents are available on both PCs and mobile phones



〈 Online Schooling using Zoom 〉

- You can practice with native Japanese speakers
- You can talk with classmates from various universities



Good news for busy people!

Non-schooling type is also available! This is a new solution for those too busy to attend the schooling. All you need is self-study!



Courses

*Moodle contents for self-study are the same.

Schooling

- ① Elementary 1
- ② Elementary 2
- ③ Intermediate 1
- ④ Intermediate 2

Non-Schooling

- ① Elementary 1
- ② Elementary 2
- ③ Intermediate 1

- Elementary 1: For beginners starting from zero.
- Elementary 2: For students who have completed the JLPT N5 level textbook.
- Intermediate 1: For students who have completed the JLPT N4 level textbook.
- Intermediate 2: For students using the Intermediate textbooks ≒ JLPT N4 or N3 level.
- Hiragana and Katakana → Elementary 1
- Kanji → Elementary 2・Intermediate 1 & 2

*Please refer to the following URL for JLPT levels.

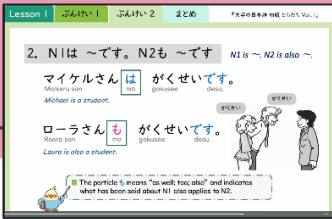
<https://www.jlpt.jp/e/about/levelsummary.html>



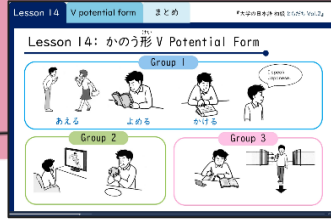
Only in the schooling course, a course completion certificate can be issued by achieving some conditions.

On-demand materials for self-study

You can use a wide variety of on-demand materials such as grammar videos, conversation practice, grammar practice, tasks, and quizzes.



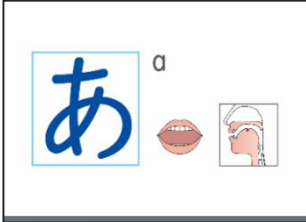
Grammar Video
(Elementary 1)



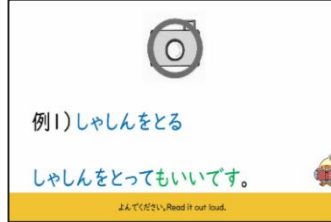
Verb Conjugation Video
(Elementary 2)



Unit Navigation Video
(Intermediate)



Hiragana Video
(Elementary 1)



Grammar Practice
(Elementary 2)



Interaction Practice
(Intermediate)



Weekly online schooling

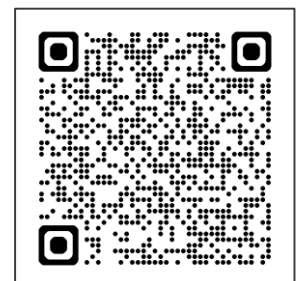
Course	Time	Date
Elementary 1	15:30~17:00 (JST)	Monday・4times Guidance 1/27・① 2/3・② 2/10・ ③ 2/17・④ 2/24
Elementary 2	15:30~17:00 (JST)	Tuesday・4times Guidance 1/28・① 2/4・② 2/11・ ③ 2/18・④ 2/25
Intermediate 1	15:30~17:00 (JST)	Wednesday・4times Guidance 1/29・① 2/5・② 2/12・ ③ 2/19・④ 2/26
Intermediate 2	15:30~17:00 (JST)	Thursday・4times Guidance 1/30・① 2/6・② 2/13・ ③ 2/20・④ 2/27

*All courses require a stable internet connection.



Application : 11/25-12/16

You can apply using this QR code (Non-schooling type available as well). If you have any questions, please feel free to contact us through this or email.



✉ OPJLC事務局 opjlc@tufs.ac.jp