

## 2020 年度春学期 授業評価アンケート集計結果

### 【設問項目】

- 設問 1 授業にはどの程度出席しましたか。
- 設問 2 自分は授業に熱心に取り組んだ。
- 設問 3 シラバスの内容はわかりやすかった。
- 設問 4 シラバスに基づいて授業が進められた。
- 設問 5 内容が充実した授業だった。
- 設問 6 講義内容は分かりやすかった。
- 設問 7 今後の学習意欲がわく授業だった。
- 設問 8 教員の熱意が感じられた。
- 設問 9 教員のプレゼンテーションは明晰だった。
- 設問 10 授業がほぼ時間通りに行われた。
- 設問 11 アクティブラーニングの内容は適切だった。
- 設問 12 授業の履修前と比べて自分の知識や能力に伸張があった。
- 設問 13 総合的に見てこの授業に満足した。
- 設問 14 この授業のオンライン実施の内容や方法は適切だった。

### 【回答選択肢】

設問 1

- 1 (9割以上) 2 (8~9割程度) 3 (6~7割程度) 4 (5割程度) 5 (4割以下)

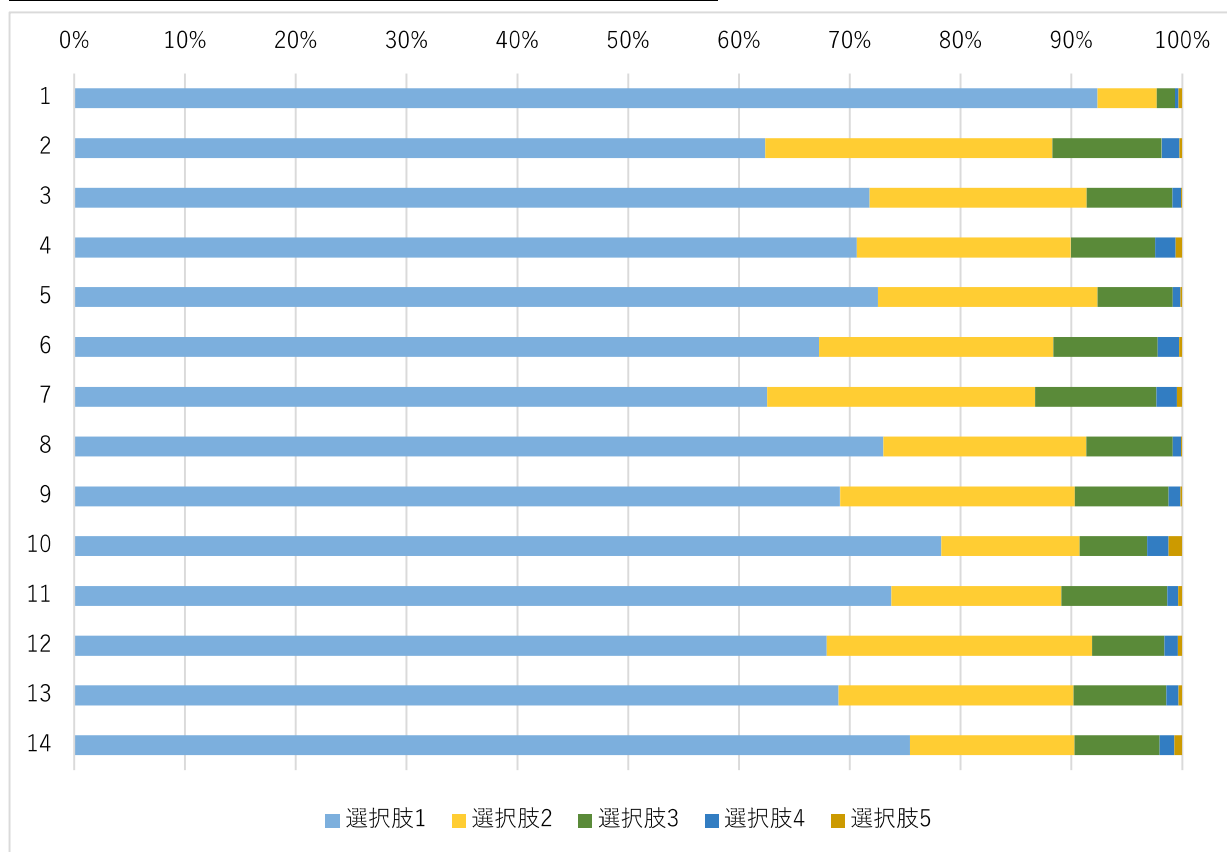
設問 2~14

- 1 (そう思う) 2 (ややそう思う) 3 (ふつう) 4 (あまり思わない) 5 (思わない)

## 1. 世界教養プログラム科目

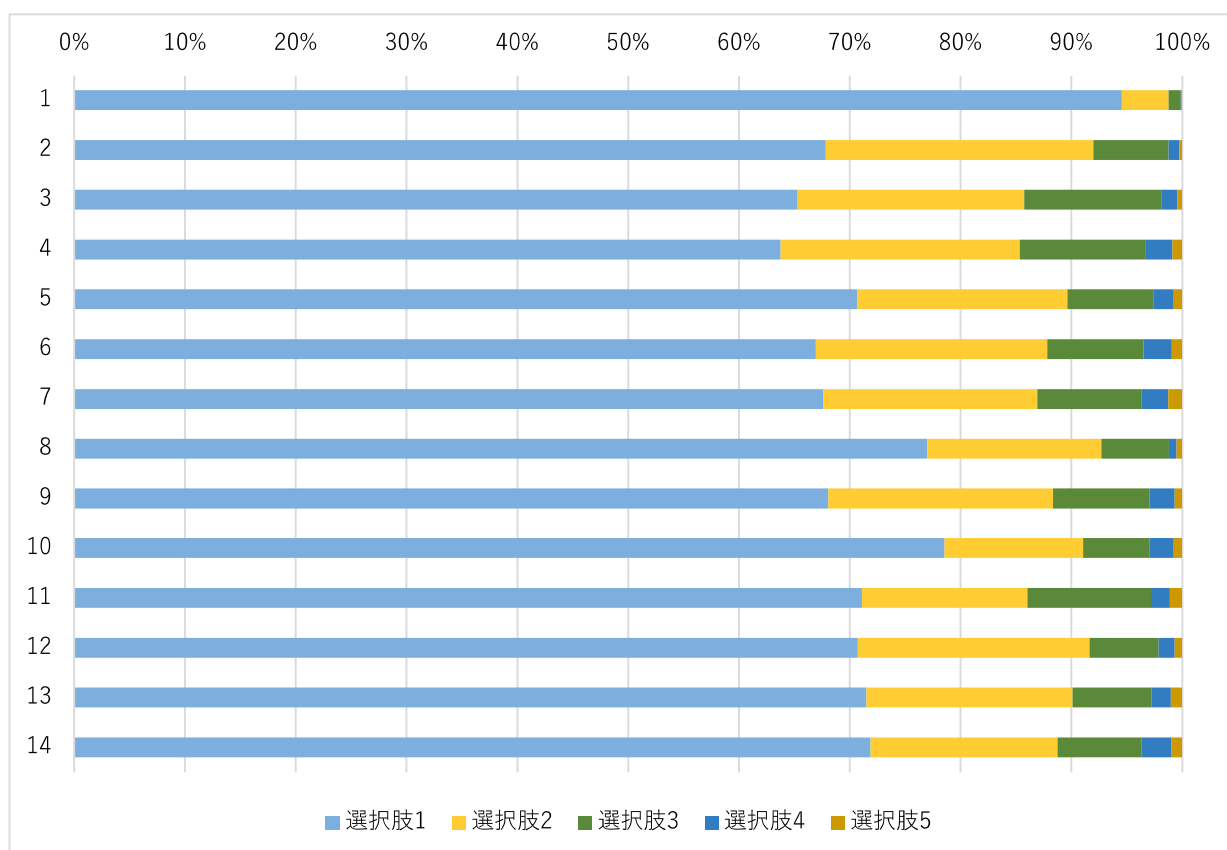
### 1.1. 世界教養科目

Q	選択肢 1	選択肢 2	選択肢 3	選択肢 4	選択肢 5
1	92.3%	5.4%	1.6%	0.4%	0.3%
2	62.4%	25.9%	9.9%	1.6%	0.3%
3	71.8%	19.6%	7.7%	0.8%	0.1%
4	70.6%	19.3%	7.6%	1.9%	0.6%
5	72.5%	19.8%	6.8%	0.7%	0.2%
6	67.2%	21.2%	9.4%	1.9%	0.3%
7	62.5%	24.2%	11.0%	1.9%	0.5%
8	73.0%	18.3%	7.8%	0.8%	0.1%
9	69.1%	21.2%	8.4%	1.1%	0.2%
10	78.3%	12.5%	6.1%	1.9%	1.3%
11	73.8%	15.3%	9.5%	1.0%	0.4%
12	67.9%	24.0%	6.5%	1.2%	0.4%
13	69.0%	21.2%	8.4%	1.1%	0.3%
14	75.4%	14.9%	7.7%	1.3%	0.7%



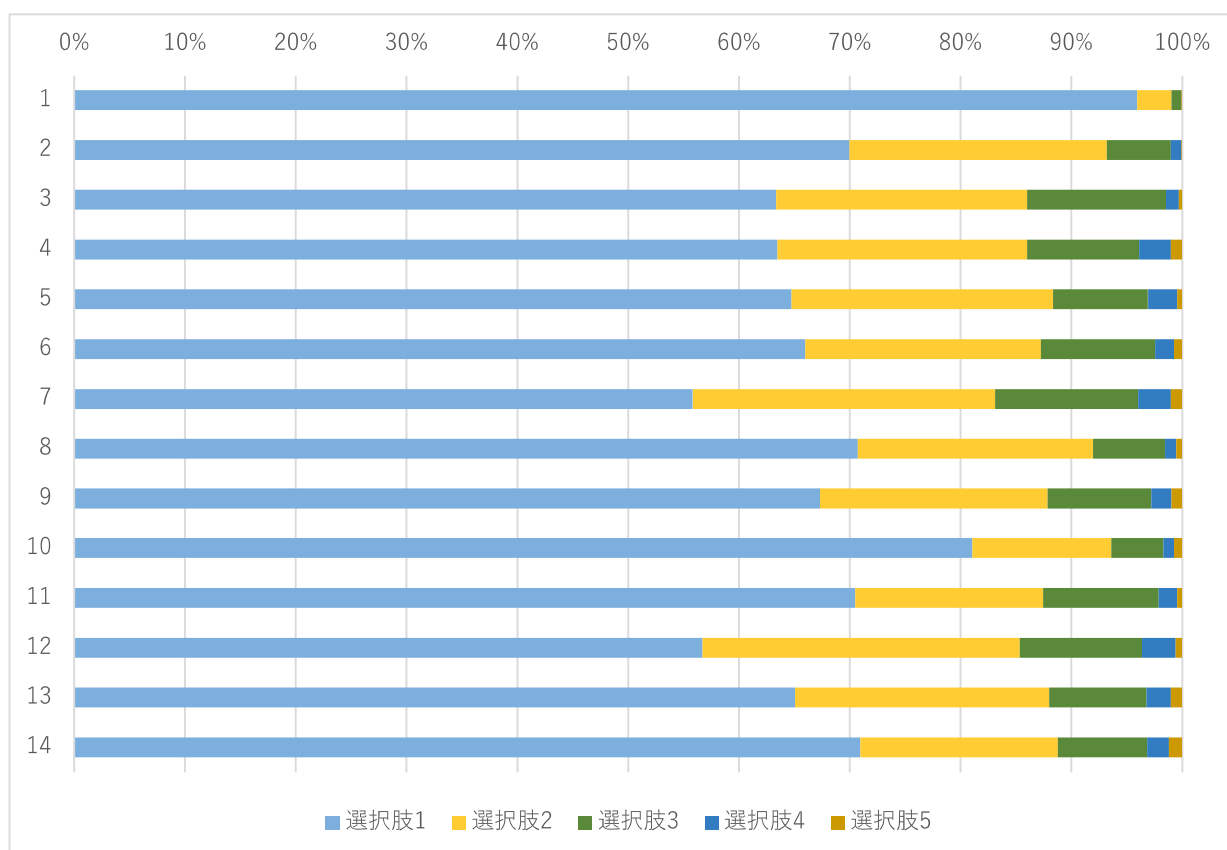
## 1.2. 専攻言語

Q	選択肢 1	選択肢 2	選択肢 3	選択肢 4	選択肢 5
1	94.6%	4.2%	1.1%	0.1%	0.1%
2	67.8%	24.2%	6.8%	1.0%	0.2%
3	65.3%	20.5%	12.4%	1.5%	0.4%
4	63.8%	21.6%	11.4%	2.4%	0.9%
5	70.7%	18.9%	7.8%	1.8%	0.8%
6	66.9%	20.9%	8.7%	2.5%	0.9%
7	67.6%	19.4%	9.4%	2.4%	1.3%
8	77.0%	15.7%	6.1%	0.7%	0.5%
9	68.1%	20.3%	8.7%	2.3%	0.7%
10	78.5%	12.5%	6.0%	2.1%	0.8%
11	71.1%	14.9%	11.2%	1.7%	1.1%
12	70.7%	20.9%	6.2%	1.4%	0.7%
13	71.5%	18.6%	7.1%	1.8%	1.0%
14	71.9%	16.9%	7.6%	2.7%	1.0%



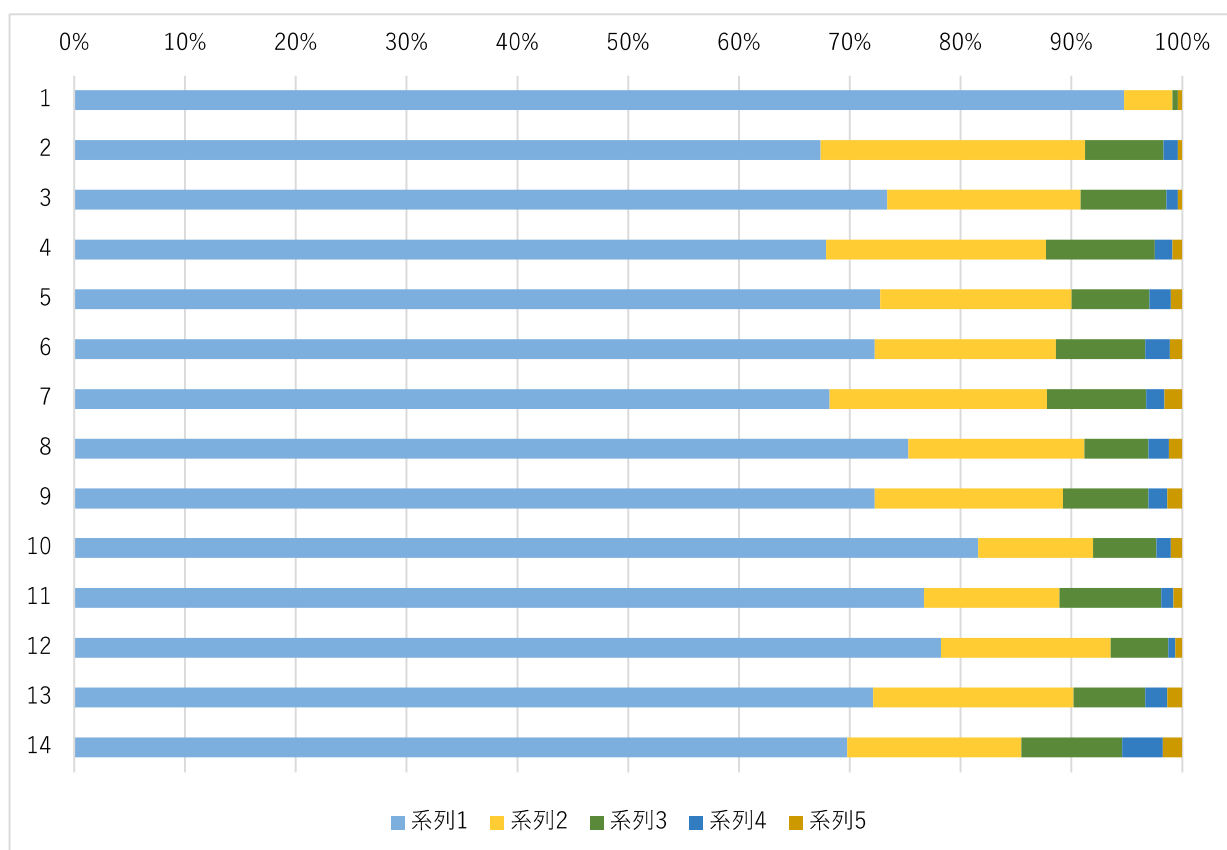
### 1.3. GLIP 英語

Q	選択肢 1	選択肢 2	選択肢 3	選択肢 4	選択肢 5
1	95.9%	3.1%	0.9%	0.0%	0.1%
2	70.0%	23.2%	5.8%	1.0%	0.1%
3	63.3%	22.6%	12.5%	1.2%	0.3%
4	63.5%	22.5%	10.1%	2.9%	1.0%
5	64.7%	23.6%	8.6%	2.7%	0.4%
6	66.0%	21.2%	10.3%	1.7%	0.7%
7	55.8%	27.3%	12.9%	2.9%	1.0%
8	70.7%	21.2%	6.5%	1.0%	0.5%
9	67.3%	20.5%	9.4%	1.8%	1.0%
10	81.0%	12.5%	4.7%	1.0%	0.7%
11	70.5%	17.0%	10.4%	1.7%	0.4%
12	56.7%	28.6%	11.1%	3.0%	0.6%
13	65.0%	22.9%	8.8%	2.2%	1.0%
14	70.9%	17.8%	8.0%	2.0%	1.2%



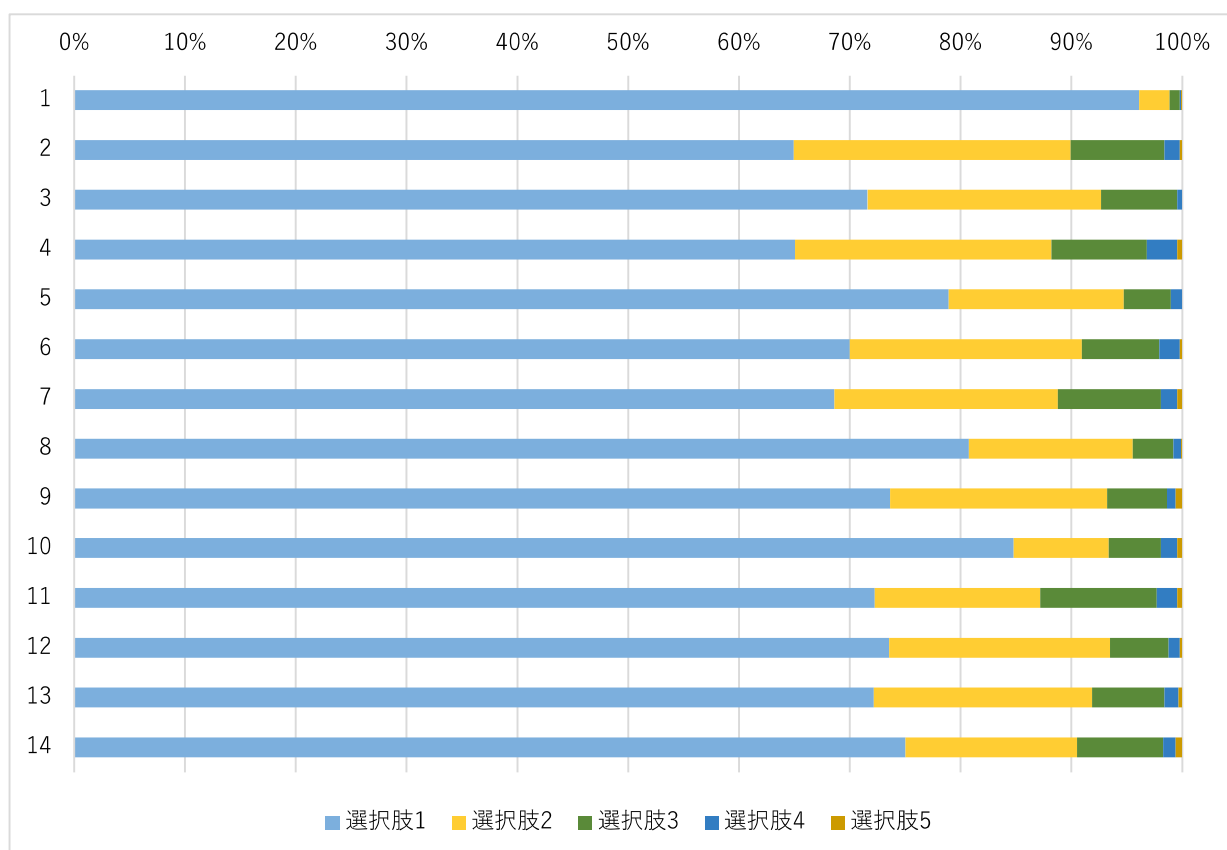
#### 1.4. 教養外国語

Q	選択肢 1	選択肢 2	選択肢 3	選択肢 4	選択肢 5
1	94.7%	4.4%	0.5%	0.0%	0.4%
2	67.4%	23.8%	7.1%	1.3%	0.4%
3	73.4%	17.5%	7.7%	1.0%	0.4%
4	67.9%	19.9%	9.8%	1.6%	0.9%
5	72.7%	17.3%	7.0%	1.9%	1.0%
6	72.2%	16.3%	8.1%	2.2%	1.1%
7	68.2%	19.6%	8.9%	1.7%	1.6%
8	75.3%	15.9%	5.8%	1.8%	1.2%
9	72.2%	17.0%	7.7%	1.7%	1.4%
10	81.6%	10.4%	5.7%	1.3%	1.0%
11	76.7%	12.2%	9.2%	1.1%	0.8%
12	78.2%	15.3%	5.2%	0.6%	0.6%
13	72.1%	18.1%	6.5%	2.0%	1.4%
14	69.8%	15.7%	9.1%	3.7%	1.8%



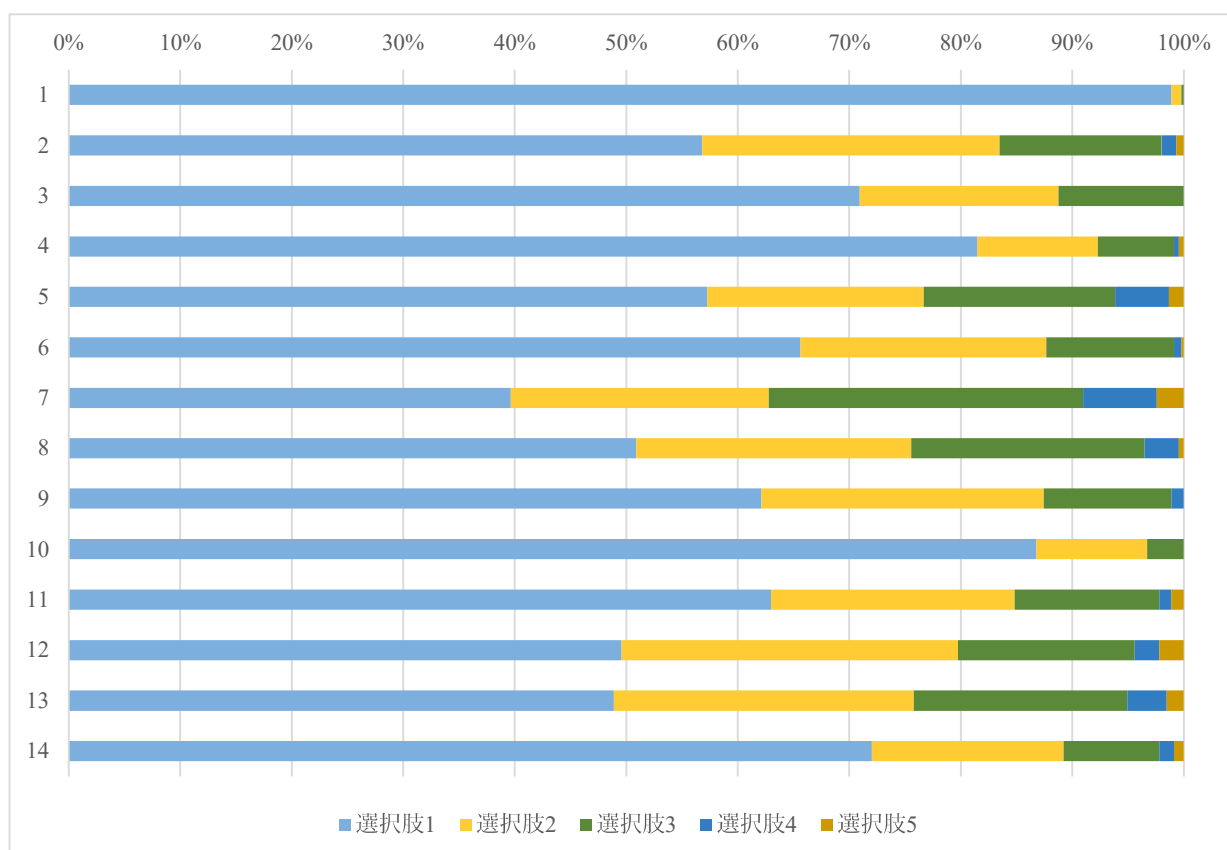
### 1.5. 地域基礎

Q	選択肢 1	選択肢 2	選択肢 3	選択肢 4	選択肢 5
1	96.1%	2.7%	0.9%	0.1%	0.1%
2	64.9%	25.0%	8.5%	1.4%	0.2%
3	71.6%	21.1%	6.9%	0.5%	0.0%
4	65.1%	23.1%	8.6%	2.7%	0.5%
5	78.9%	15.8%	4.2%	1.0%	0.0%
6	70.0%	21.0%	7.0%	1.8%	0.2%
7	68.6%	20.2%	9.3%	1.5%	0.5%
8	80.8%	14.8%	3.7%	0.7%	0.1%
9	73.7%	19.6%	5.4%	0.8%	0.6%
10	84.8%	8.6%	4.7%	1.5%	0.5%
11	72.3%	14.9%	10.5%	1.8%	0.5%
12	73.5%	19.9%	5.3%	1.0%	0.2%
13	72.2%	19.7%	6.5%	1.3%	0.3%
14	75.0%	15.5%	7.8%	1.1%	0.6%



## 1.6. 基礎リテラシー

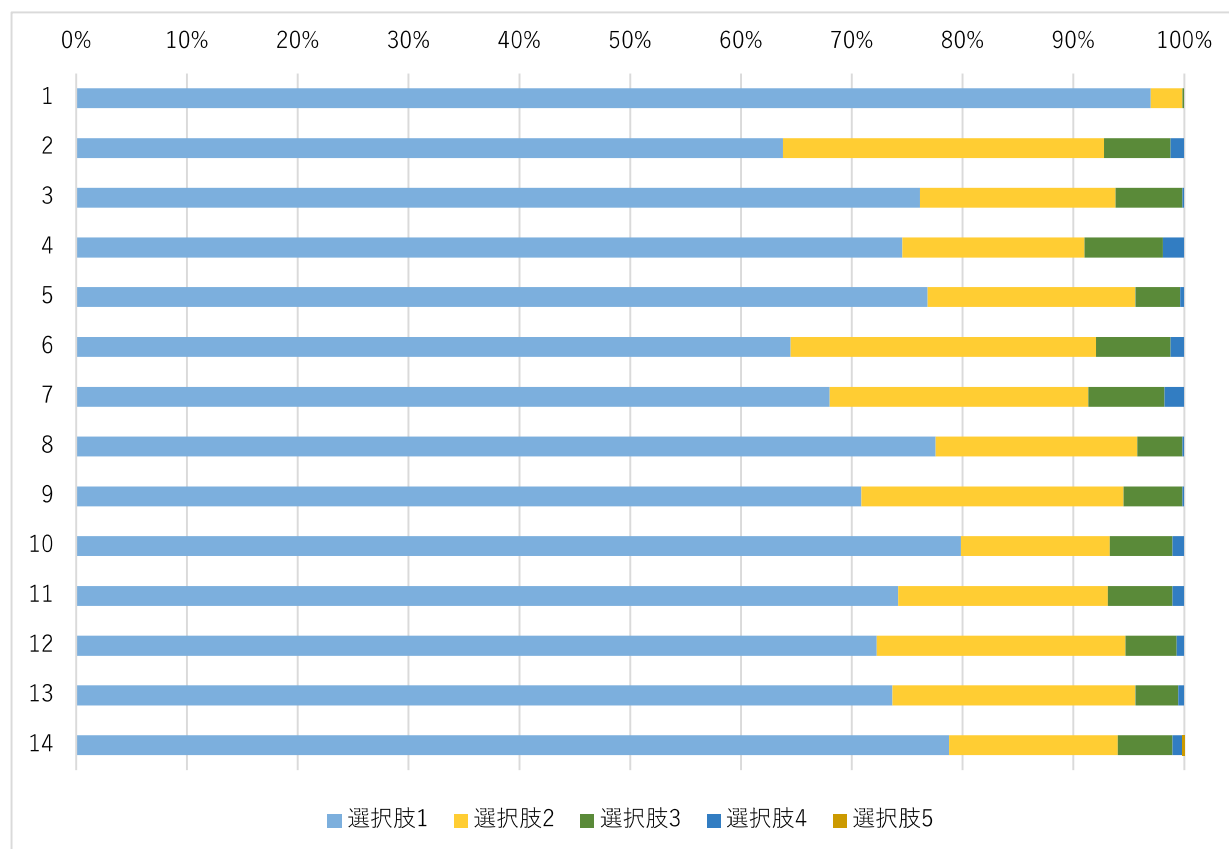
Q	選択肢 1	選択肢 2	選択肢 3	選択肢 4	選択肢 5
1	98.9%	0.9%	0.2%	0.0%	0.0%
2	56.8%	26.7%	14.5%	1.3%	0.7%
3	70.9%	17.8%	11.2%	0.0%	0.0%
4	81.5%	10.8%	6.8%	0.4%	0.4%
5	57.3%	19.4%	17.2%	4.8%	1.3%
6	65.6%	22.0%	11.5%	0.7%	0.2%
7	39.6%	23.1%	28.2%	6.6%	2.4%
8	50.9%	24.7%	20.9%	3.1%	0.4%
9	62.1%	25.3%	11.5%	1.1%	0.0%
10	86.8%	9.9%	3.3%	0.0%	0.0%
11	63.0%	21.8%	13.0%	1.1%	1.1%
12	49.6%	30.2%	15.9%	2.2%	2.2%
13	48.9%	26.9%	19.2%	3.5%	1.5%
14	72.0%	17.2%	8.6%	1.3%	0.9%



## 2. 言語文化学部

### 2.1. 導入科目

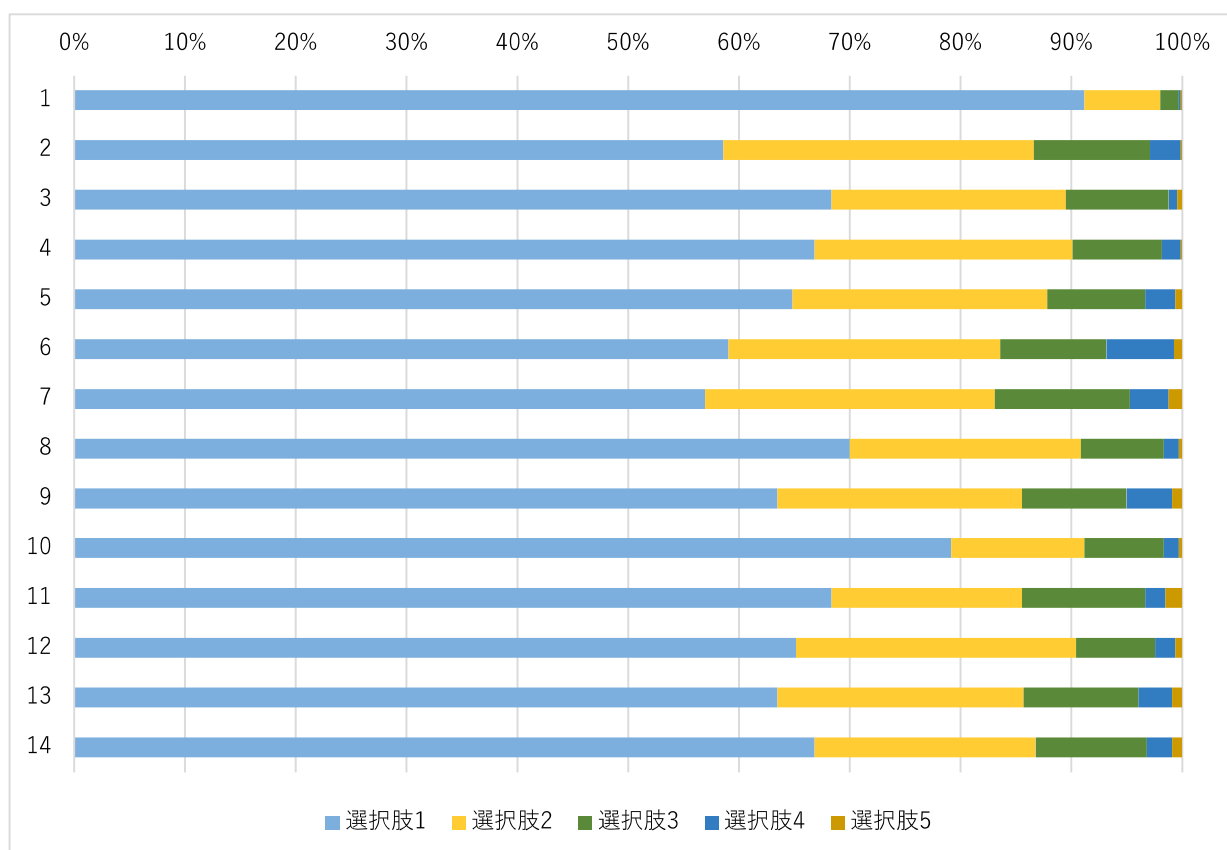
Q	選択肢 1	選択肢 2	選択肢 3	選択肢 4	選択肢 5
1	97.0%	2.8%	0.2%	0.0%	0.0%
2	63.8%	29.0%	6.0%	1.2%	0.0%
3	76.1%	17.7%	6.0%	0.2%	0.0%
4	74.6%	16.4%	7.1%	1.9%	0.0%
5	76.9%	18.7%	4.1%	0.4%	0.0%
6	64.5%	27.6%	6.7%	1.2%	0.0%
7	68.0%	23.3%	6.9%	1.8%	0.0%
8	77.6%	18.2%	4.1%	0.2%	0.0%
9	70.8%	23.7%	5.3%	0.2%	0.0%
10	79.9%	13.4%	5.7%	1.1%	0.0%
11	74.2%	18.9%	5.8%	1.1%	0.0%
12	72.3%	22.4%	4.6%	0.7%	0.0%
13	73.7%	21.9%	3.9%	0.5%	0.0%
14	78.8%	15.2%	4.9%	0.9%	0.2%





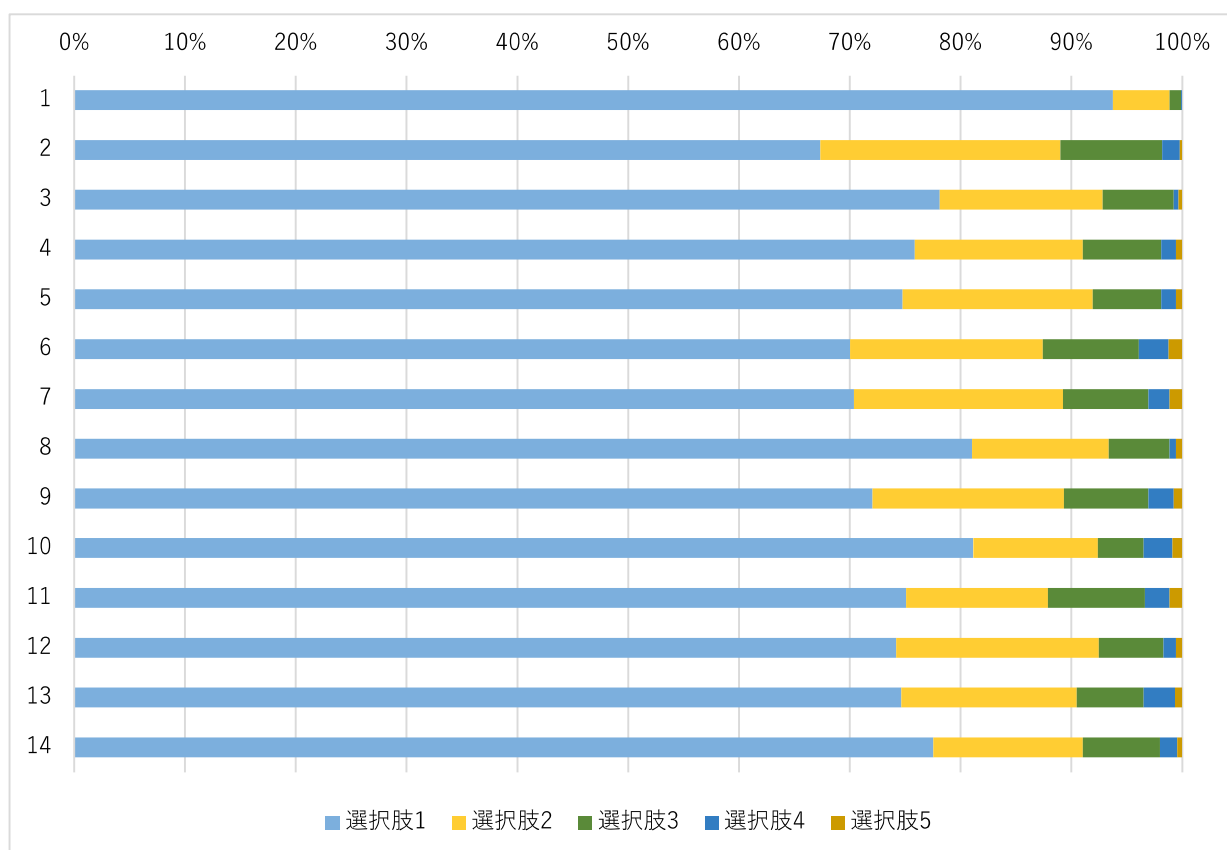
## 2.2. 概論科目

Q	選択肢 1	選択肢 2	選択肢 3	選択肢 4	選択肢 5
1	91.2%	6.8%	1.7%	0.2%	0.2%
2	58.6%	28.0%	10.5%	2.7%	0.2%
3	68.3%	21.2%	9.3%	0.8%	0.5%
4	66.8%	23.3%	8.1%	1.7%	0.2%
5	64.8%	23.0%	8.8%	2.7%	0.6%
6	59.1%	24.5%	9.6%	6.1%	0.8%
7	56.9%	26.2%	12.2%	3.5%	1.2%
8	70.0%	20.9%	7.5%	1.4%	0.3%
9	63.5%	22.1%	9.4%	4.1%	0.9%
10	79.1%	12.0%	7.2%	1.4%	0.3%
11	68.3%	17.2%	11.1%	1.8%	1.5%
12	65.1%	25.3%	7.2%	1.8%	0.6%
13	63.5%	22.2%	10.4%	3.0%	0.9%
14	66.8%	19.9%	10.0%	2.3%	0.9%



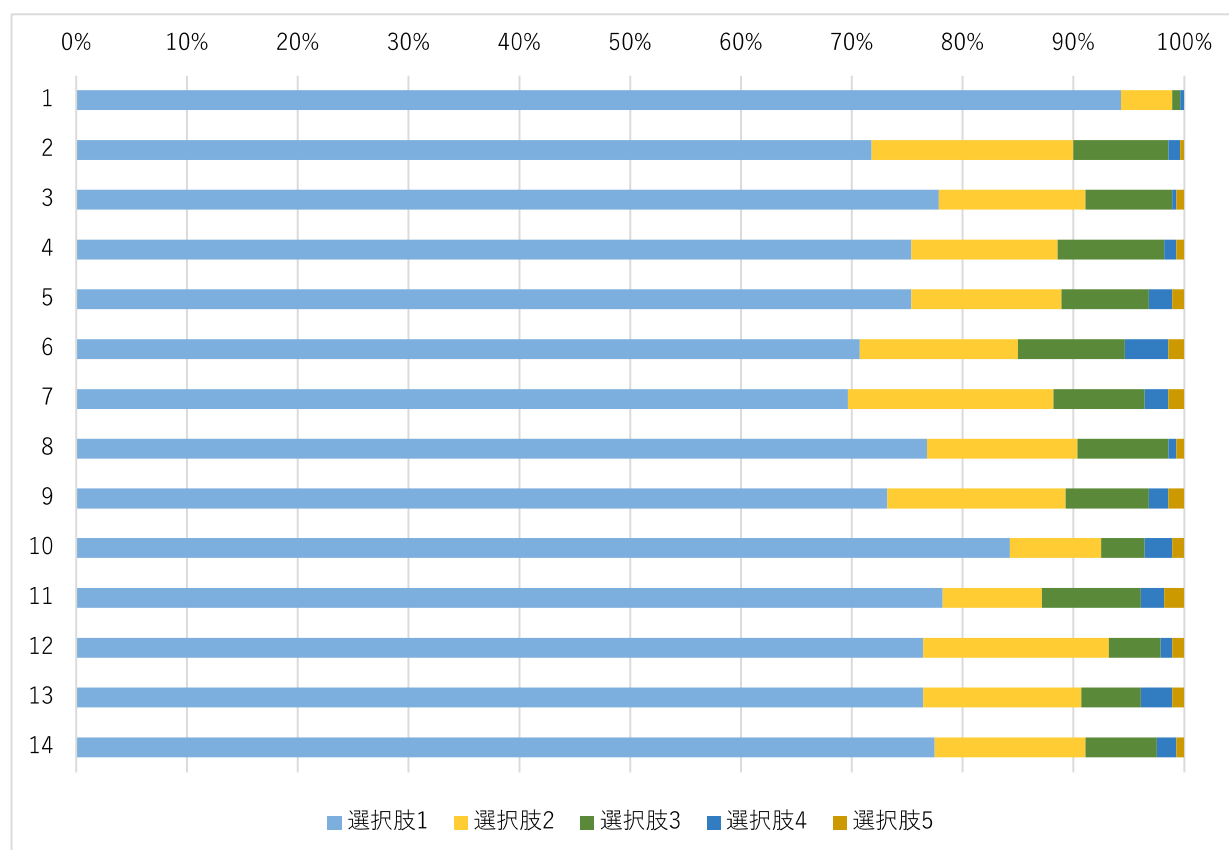
### 2.3. 選擇科目

Q	選擇肢 1	選擇肢 2	選擇肢 3	選擇肢 4	選擇肢 5
1	93.7%	5.2%	1.0%	0.1%	0.0%
2	67.3%	21.7%	9.2%	1.6%	0.2%
3	78.1%	14.7%	6.4%	0.4%	0.3%
4	75.9%	15.2%	7.1%	1.3%	0.6%
5	74.7%	17.2%	6.2%	1.3%	0.6%
6	70.0%	17.4%	8.6%	2.7%	1.2%
7	70.4%	18.9%	7.7%	1.9%	1.1%
8	81.0%	12.3%	5.5%	0.6%	0.6%
9	72.1%	17.3%	7.6%	2.2%	0.8%
10	81.1%	11.2%	4.2%	2.6%	0.9%
11	75.1%	12.8%	8.8%	2.2%	1.1%
12	74.2%	18.3%	5.8%	1.1%	0.6%
13	74.6%	15.8%	6.1%	2.8%	0.7%
14	77.6%	13.5%	7.0%	1.6%	0.4%



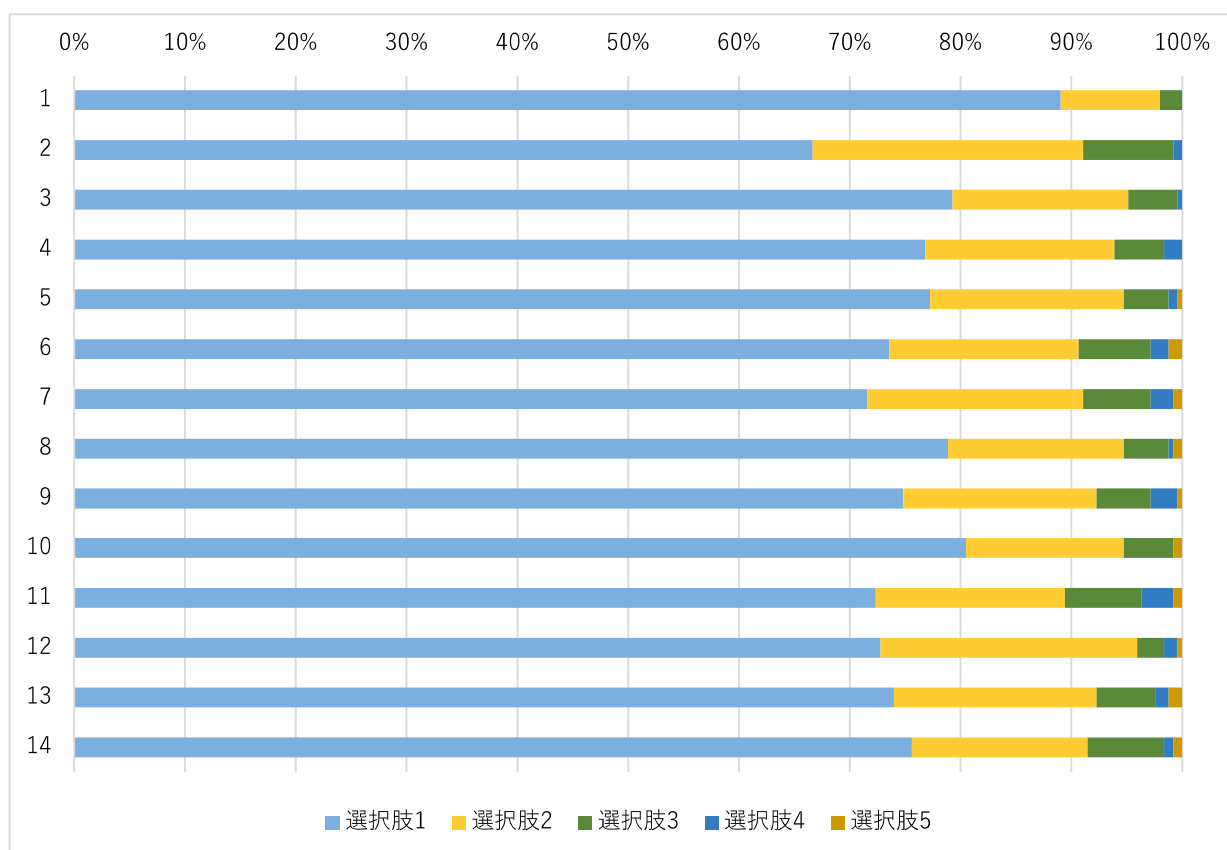
## 2.4. 言語情報コース

Q	選択肢 1	選択肢 2	選択肢 3	選択肢 4	選択肢 5
1	94.3%	4.6%	0.7%	0.4%	0.0%
2	71.8%	18.2%	8.6%	1.1%	0.4%
3	77.9%	13.2%	7.9%	0.4%	0.7%
4	75.4%	13.2%	9.6%	1.1%	0.7%
5	75.4%	13.6%	7.9%	2.1%	1.1%
6	70.7%	14.3%	9.6%	3.9%	1.4%
7	69.6%	18.6%	8.2%	2.1%	1.4%
8	76.8%	13.6%	8.2%	0.7%	0.7%
9	73.2%	16.1%	7.5%	1.8%	1.4%
10	84.3%	8.2%	3.9%	2.5%	1.1%
11	78.2%	8.9%	8.9%	2.1%	1.8%
12	76.4%	16.8%	4.6%	1.1%	1.1%
13	76.4%	14.3%	5.4%	2.9%	1.1%
14	77.5%	13.6%	6.4%	1.8%	0.7%



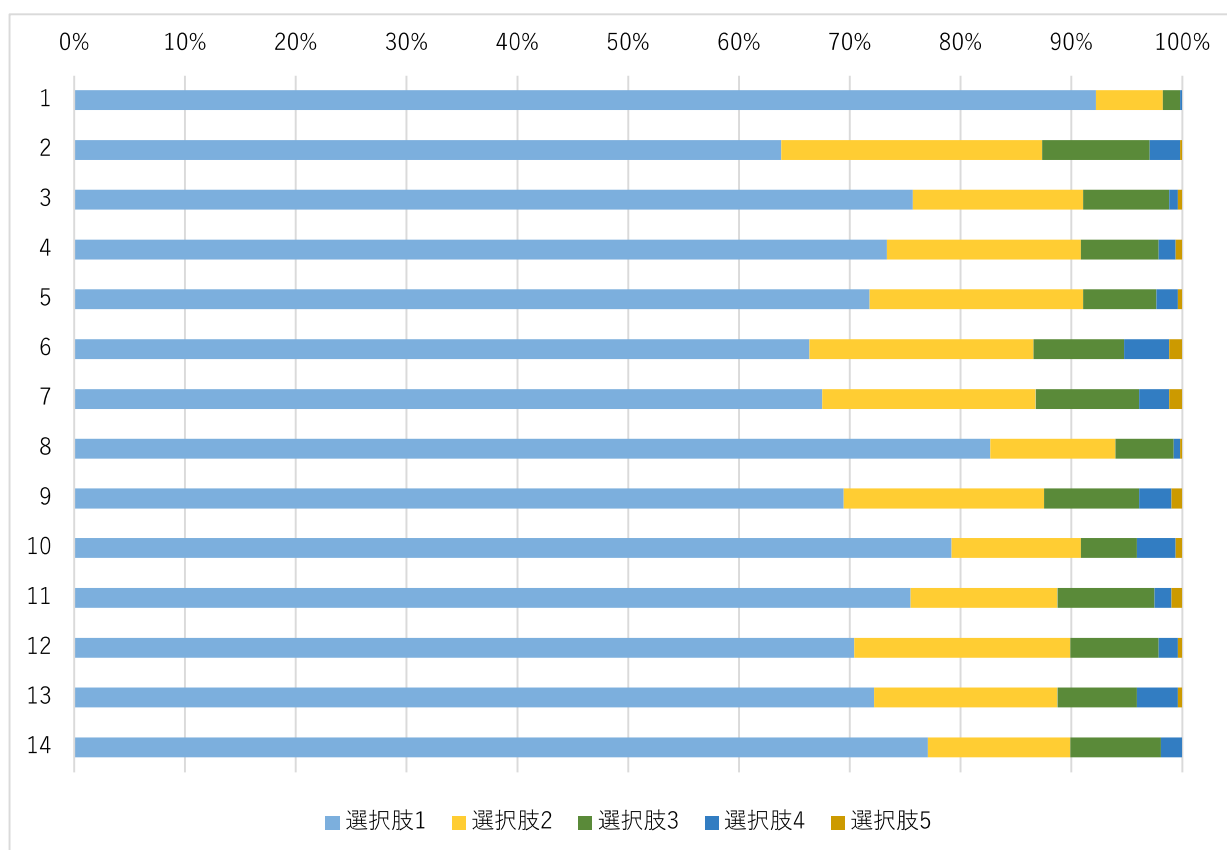
## 2.5. GC コース

Q	選択肢 1	選択肢 2	選択肢 3	選択肢 4	選択肢 5
1	89.0%	8.9%	2.0%	0.0%	0.0%
2	66.7%	24.4%	8.1%	0.8%	0.0%
3	79.3%	15.9%	4.5%	0.4%	0.0%
4	76.8%	17.1%	4.5%	1.6%	0.0%
5	77.2%	17.5%	4.1%	0.8%	0.4%
6	73.6%	17.1%	6.5%	1.6%	1.2%
7	71.5%	19.5%	6.1%	2.0%	0.8%
8	78.9%	15.9%	4.1%	0.4%	0.8%
9	74.8%	17.5%	4.9%	2.4%	0.4%
10	80.5%	14.2%	4.5%	0.0%	0.8%
11	72.4%	17.1%	6.9%	2.8%	0.8%
12	72.8%	23.2%	2.4%	1.2%	0.4%
13	74.0%	18.3%	5.3%	1.2%	1.2%
14	75.6%	15.9%	6.9%	0.8%	0.8%



## 2.6. 総合文化コース

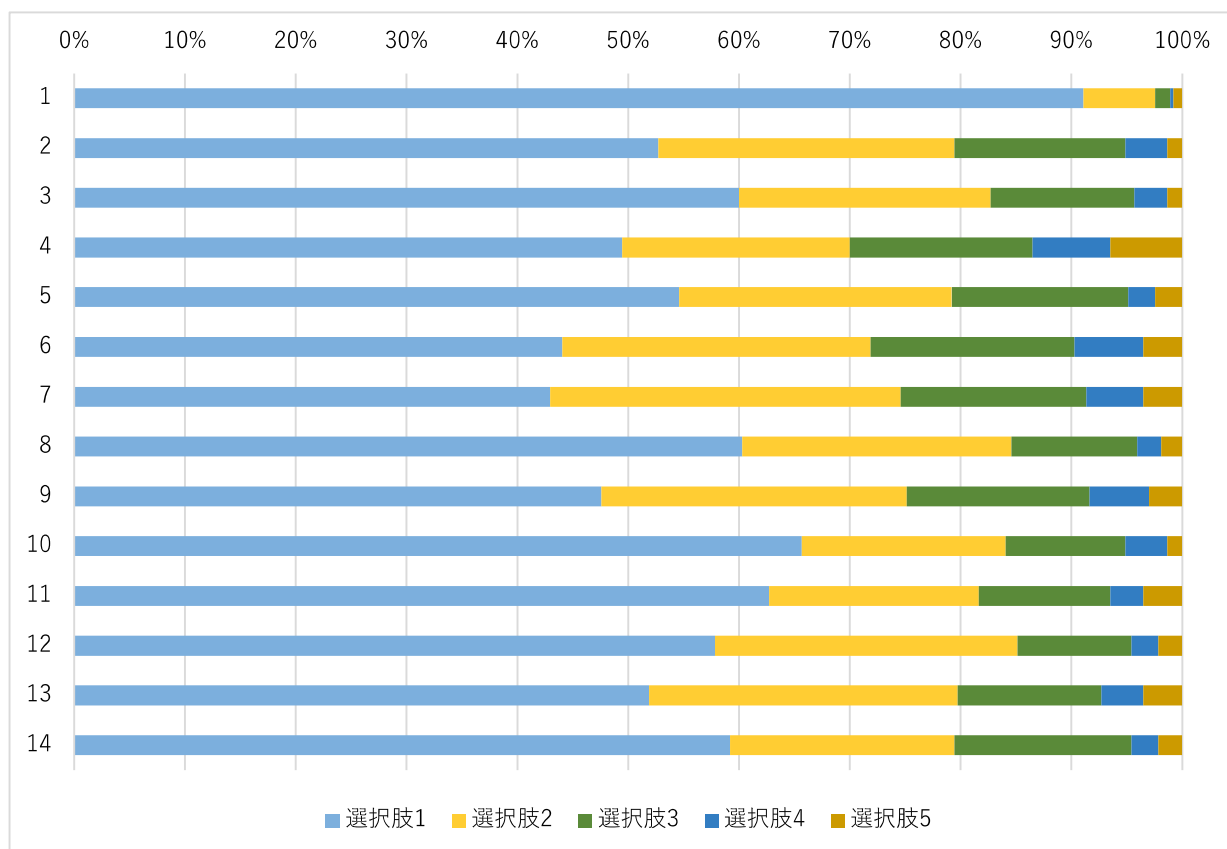
Q	選択肢 1	選択肢 2	選択肢 3	選択肢 4	選択肢 5
1	92.2%	6.0%	1.6%	0.2%	0.0%
2	63.8%	23.5%	9.7%	2.7%	0.2%
3	75.7%	15.4%	7.8%	0.8%	0.4%
4	73.3%	17.5%	7.0%	1.6%	0.6%
5	71.8%	19.3%	6.6%	1.9%	0.4%
6	66.3%	20.2%	8.2%	4.1%	1.2%
7	67.5%	19.3%	9.3%	2.7%	1.2%
8	82.7%	11.3%	5.3%	0.6%	0.2%
9	69.5%	18.1%	8.6%	2.9%	1.0%
10	79.2%	11.7%	5.1%	3.5%	0.6%
11	75.5%	13.2%	8.8%	1.6%	1.0%
12	70.4%	19.5%	8.0%	1.8%	0.4%
13	72.2%	16.5%	7.2%	3.7%	0.4%
14	77.0%	12.8%	8.2%	1.9%	0.0%



### 3. 国際社会学部

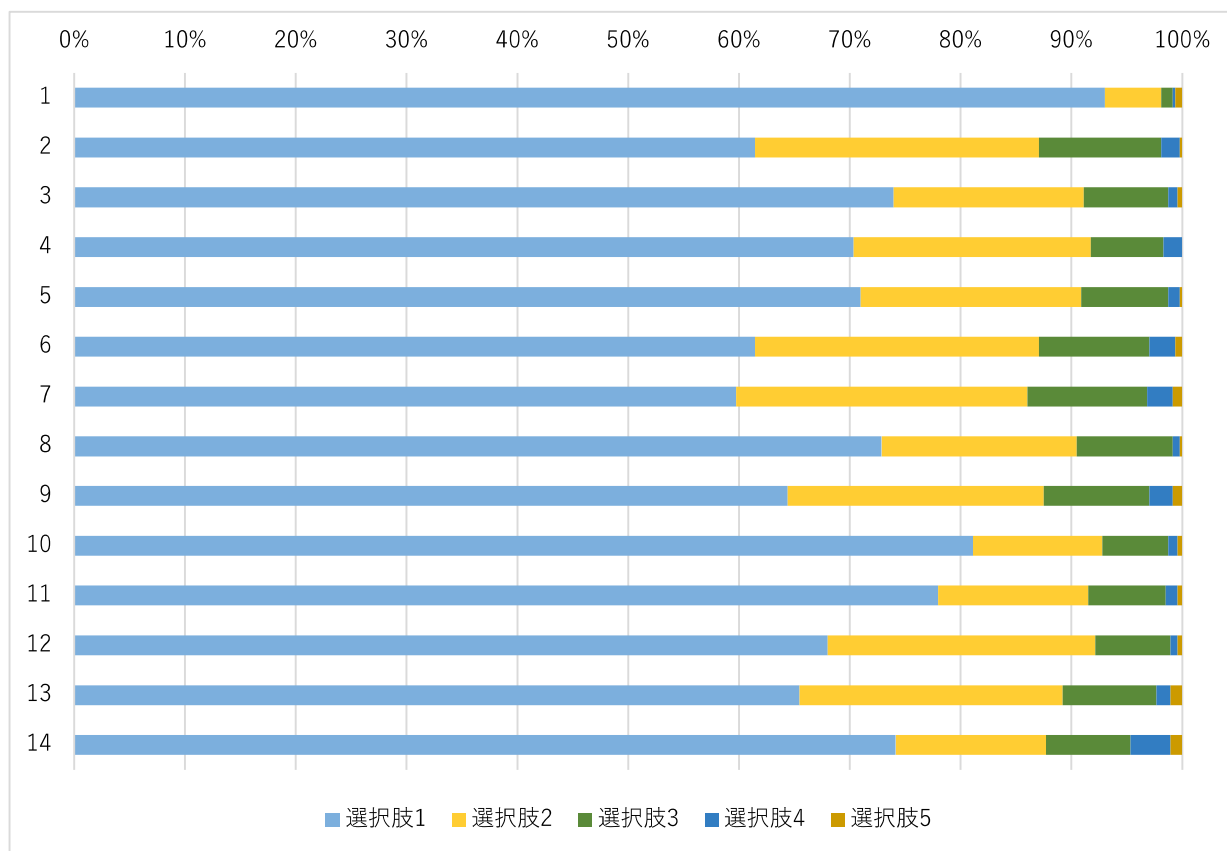
#### 3.1. 導入科目

Q	選択肢 1	選択肢 2	選択肢 3	選択肢 4	選択肢 5
1	91.1%	6.5%	1.4%	0.3%	0.8%
2	52.7%	26.8%	15.4%	3.8%	1.4%
3	60.0%	22.7%	13.0%	3.0%	1.4%
4	49.5%	20.5%	16.5%	7.0%	6.5%
5	54.6%	24.6%	15.9%	2.4%	2.4%
6	44.1%	27.8%	18.4%	6.2%	3.5%
7	43.0%	31.6%	16.8%	5.1%	3.5%
8	60.3%	24.3%	11.4%	2.2%	1.9%
9	47.6%	27.6%	16.5%	5.4%	3.0%
10	65.7%	18.4%	10.8%	3.8%	1.4%
11	62.7%	18.9%	11.9%	3.0%	3.5%
12	57.8%	27.3%	10.3%	2.4%	2.2%
13	51.9%	27.8%	13.0%	3.8%	3.5%
14	59.2%	20.3%	15.9%	2.4%	2.2%



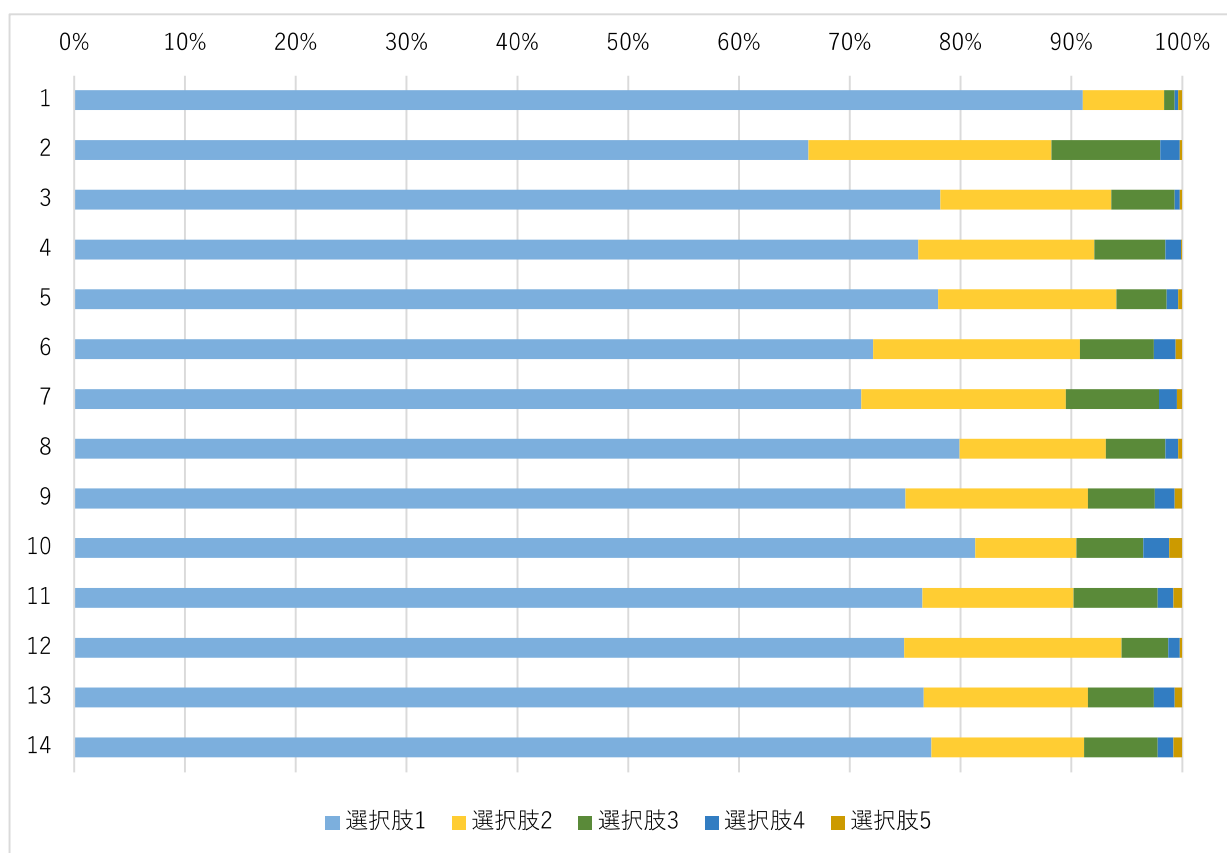
### 3.2. 概論科目

Q	選択肢 1	選択肢 2	選択肢 3	選択肢 4	選択肢 5
1	93.0%	5.1%	1.1%	0.2%	0.6%
2	61.4%	25.6%	11.0%	1.7%	0.2%
3	73.9%	17.2%	7.6%	0.8%	0.4%
4	70.3%	21.4%	6.6%	1.7%	0.0%
5	71.0%	19.9%	7.8%	1.1%	0.2%
6	61.4%	25.6%	10.0%	2.3%	0.6%
7	59.7%	26.3%	10.8%	2.3%	0.8%
8	72.9%	17.6%	8.7%	0.6%	0.2%
9	64.4%	23.1%	9.5%	2.1%	0.8%
10	81.1%	11.7%	5.9%	0.8%	0.4%
11	78.0%	13.6%	7.0%	1.1%	0.4%
12	68.0%	24.2%	6.8%	0.6%	0.4%
13	65.5%	23.7%	8.5%	1.3%	1.1%
14	74.2%	13.6%	7.6%	3.6%	1.1%



### 3.3. 選擇科目

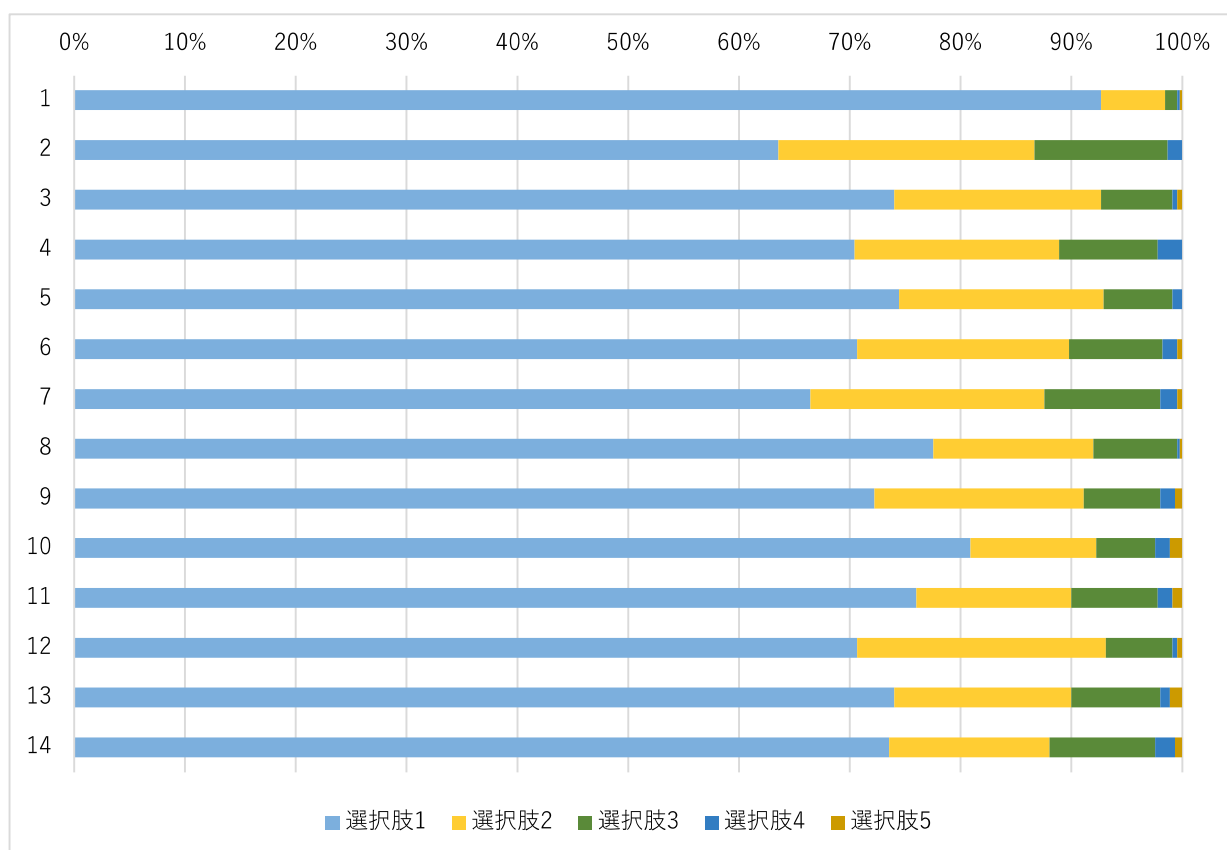
Q	選擇肢 1	選擇肢 2	選擇肢 3	選擇肢 4	選擇肢 5
1	91.0%	7.4%	0.9%	0.4%	0.4%
2	66.3%	21.9%	9.8%	1.8%	0.2%
3	78.2%	15.4%	5.7%	0.5%	0.2%
4	76.2%	15.9%	6.4%	1.4%	0.1%
5	77.9%	16.1%	4.6%	1.1%	0.4%
6	72.1%	18.7%	6.7%	2.0%	0.6%
7	71.1%	18.4%	8.4%	1.6%	0.5%
8	79.9%	13.2%	5.4%	1.2%	0.4%
9	75.0%	16.5%	6.1%	1.8%	0.7%
10	81.3%	9.1%	6.1%	2.3%	1.2%
11	76.5%	13.7%	7.6%	1.4%	0.8%
12	74.9%	19.6%	4.2%	1.1%	0.2%
13	76.7%	14.8%	6.0%	1.9%	0.7%
14	77.4%	13.8%	6.7%	1.4%	0.8%





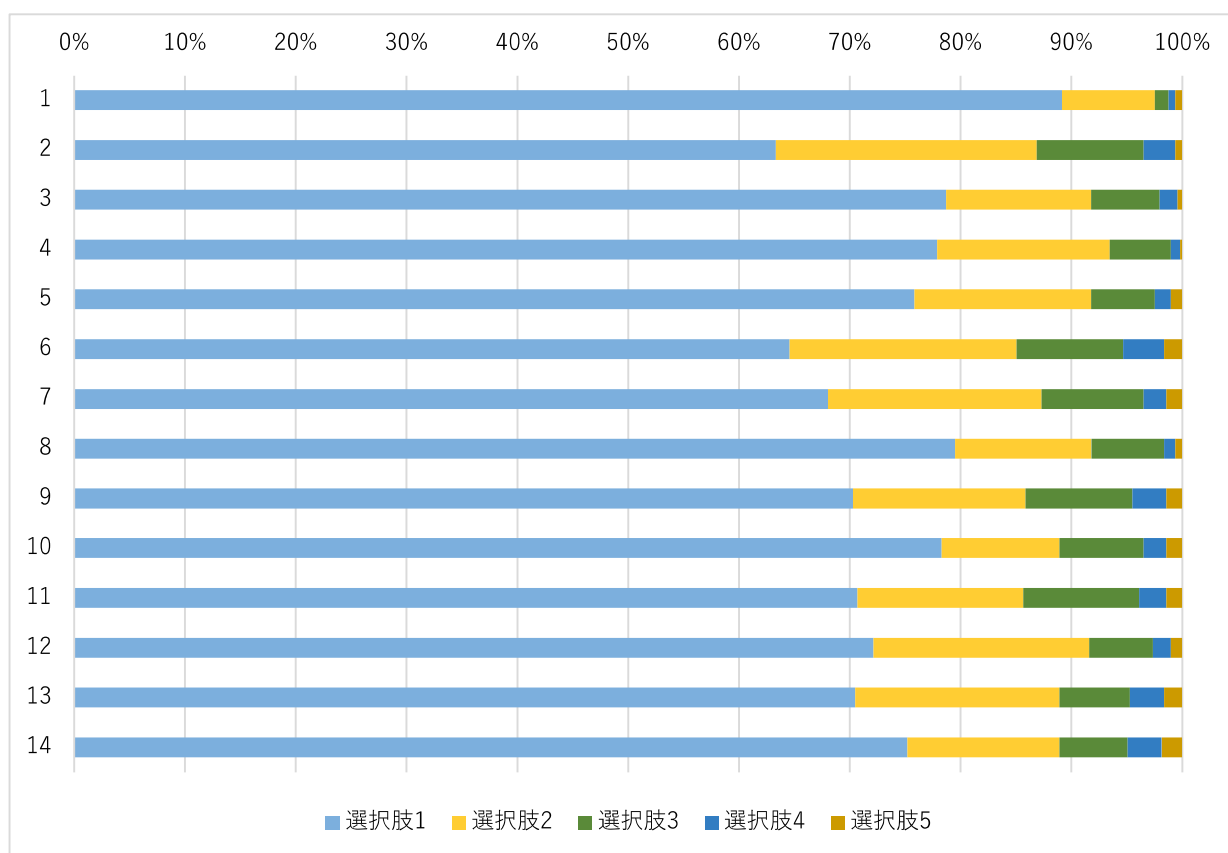
### 3.6. 地域社会研究コース

Q	選択肢 1	選択肢 2	選択肢 3	選択肢 4	選択肢 5
1	92.7%	5.8%	1.1%	0.2%	0.2%
2	63.6%	23.1%	12.0%	1.3%	0.0%
3	74.0%	18.7%	6.4%	0.4%	0.4%
4	70.4%	18.4%	8.9%	2.2%	0.0%
5	74.4%	18.4%	6.2%	0.9%	0.0%
6	70.7%	19.1%	8.4%	1.3%	0.4%
7	66.4%	21.1%	10.4%	1.6%	0.4%
8	77.6%	14.4%	7.6%	0.2%	0.2%
9	72.2%	18.9%	6.9%	1.3%	0.7%
10	80.9%	11.3%	5.3%	1.3%	1.1%
11	76.0%	14.0%	7.8%	1.3%	0.9%
12	70.7%	22.4%	6.0%	0.4%	0.4%
13	74.0%	16.0%	8.0%	0.9%	1.1%
14	73.6%	14.4%	9.6%	1.8%	0.7%



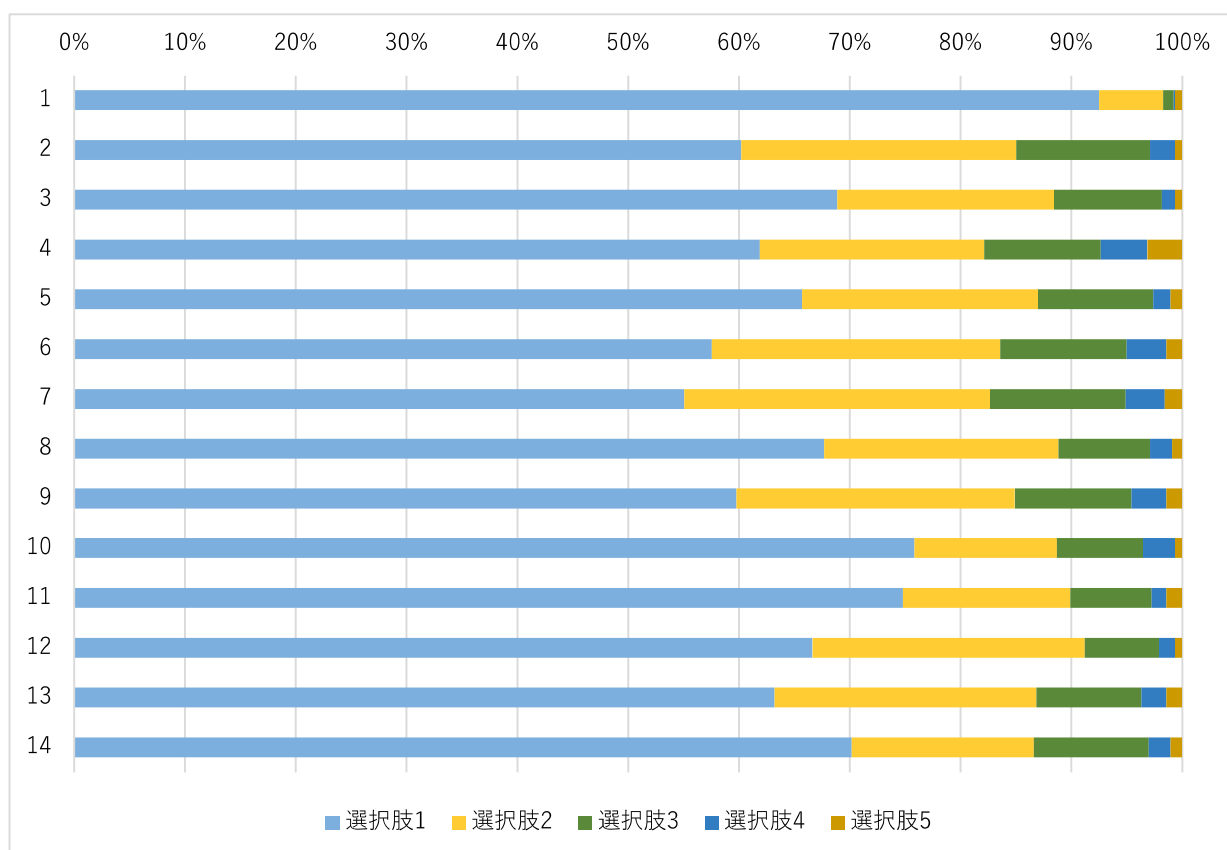
### 3.7. 現代世界論コース

Q	選択肢 1	選択肢 2	選択肢 3	選択肢 4	選択肢 5
1	89.1%	8.4%	1.2%	0.6%	0.6%
2	63.3%	23.6%	9.6%	2.9%	0.6%
3	78.7%	13.1%	6.1%	1.6%	0.4%
4	77.9%	15.6%	5.5%	0.8%	0.2%
5	75.8%	16.0%	5.7%	1.4%	1.0%
6	64.5%	20.5%	9.6%	3.7%	1.6%
7	68.0%	19.3%	9.2%	2.0%	1.4%
8	79.5%	12.3%	6.6%	1.0%	0.6%
9	70.3%	15.6%	9.6%	3.1%	1.4%
10	78.3%	10.7%	7.6%	2.0%	1.4%
11	70.7%	15.0%	10.5%	2.5%	1.4%
12	72.1%	19.5%	5.7%	1.6%	1.0%
13	70.5%	18.4%	6.4%	3.1%	1.6%
14	75.2%	13.7%	6.1%	3.1%	1.8%



### 3.8. 国際関係論コース

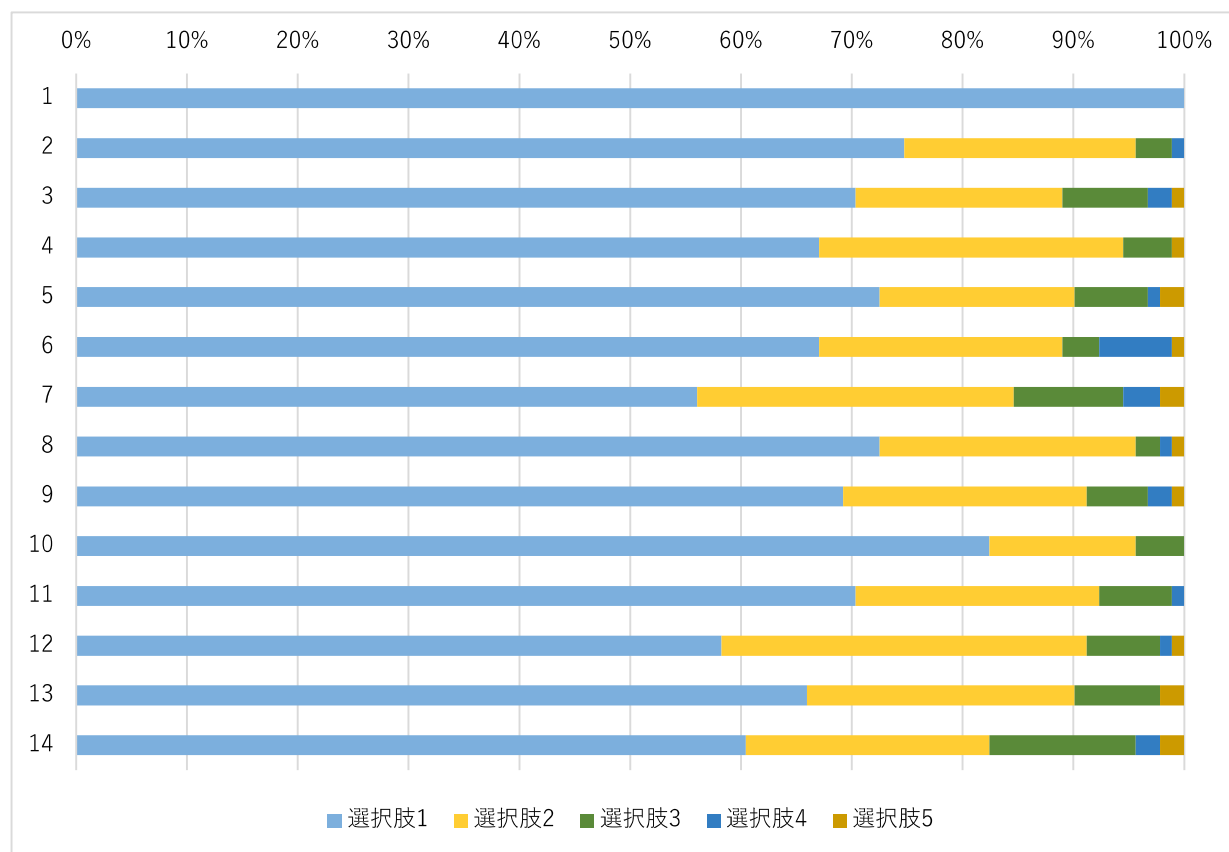
Q	選択肢 1	選択肢 2	選択肢 3	選択肢 4	選択肢 5
1	92.5%	5.8%	0.9%	0.1%	0.7%
2	60.2%	24.8%	12.1%	2.2%	0.7%
3	68.9%	19.6%	9.7%	1.2%	0.7%
4	61.9%	20.2%	10.5%	4.2%	3.2%
5	65.7%	21.3%	10.4%	1.6%	1.1%
6	57.6%	26.0%	11.4%	3.5%	1.4%
7	55.1%	27.6%	12.2%	3.5%	1.6%
8	67.7%	21.2%	8.3%	2.0%	0.9%
9	59.8%	25.1%	10.5%	3.2%	1.4%
10	75.8%	12.9%	7.8%	2.9%	0.7%
11	74.8%	15.1%	7.4%	1.3%	1.4%
12	66.6%	24.6%	6.7%	1.4%	0.7%
13	63.2%	23.7%	9.5%	2.2%	1.4%
14	70.2%	16.4%	10.4%	2.0%	1.1%



#### 4. 国際日本学部

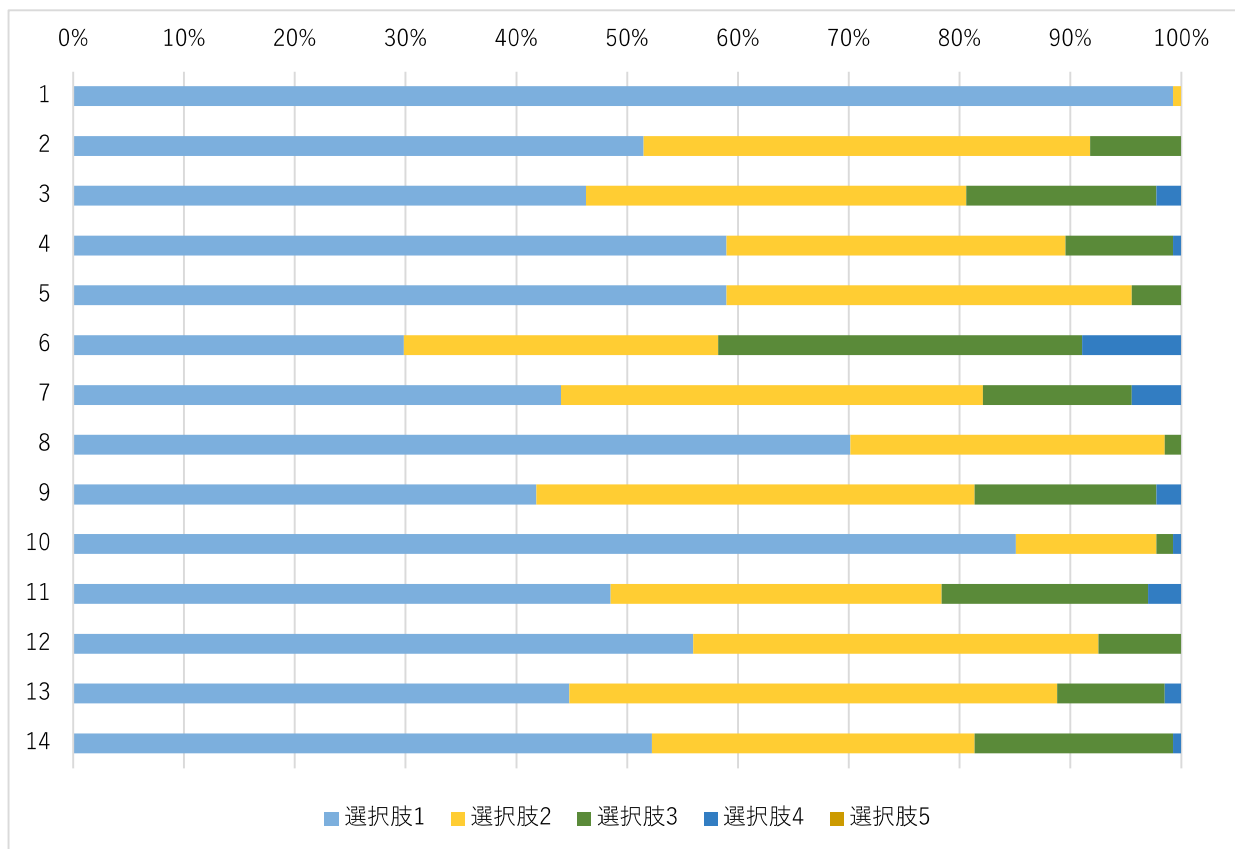
##### 4.1. 協働実践科目

Q	選択肢 1	選択肢 2	選択肢 3	選択肢 4	選択肢 5
1	100.0%	0.0%	0.0%	0.0%	0.0%
2	74.7%	20.9%	3.3%	1.1%	0.0%
3	70.3%	18.7%	7.7%	2.2%	1.1%
4	67.0%	27.5%	4.4%	0.0%	1.1%
5	72.5%	17.6%	6.6%	1.1%	2.2%
6	67.0%	22.0%	3.3%	6.6%	1.1%
7	56.0%	28.6%	9.9%	3.3%	2.2%
8	72.5%	23.1%	2.2%	1.1%	1.1%
9	69.2%	22.0%	5.5%	2.2%	1.1%
10	82.4%	13.2%	4.4%	0.0%	0.0%
11	70.3%	22.0%	6.6%	1.1%	0.0%
12	58.2%	33.0%	6.6%	1.1%	1.1%
13	65.9%	24.2%	7.7%	0.0%	2.2%
14	60.4%	22.0%	13.2%	2.2%	2.2%



#### 4.2. 導入科目

Q	選択肢 1	選択肢 2	選択肢 3	選択肢 4	選択肢 5
1	99.3%	0.7%	0.0%	0.0%	0.0%
2	51.5%	40.3%	8.2%	0.0%	0.0%
3	46.3%	34.3%	17.2%	2.2%	0.0%
4	59.0%	30.6%	9.7%	0.7%	0.0%
5	59.0%	36.6%	4.5%	0.0%	0.0%
6	29.9%	28.4%	32.8%	9.0%	0.0%
7	44.0%	38.1%	13.4%	4.5%	0.0%
8	70.1%	28.4%	1.5%	0.0%	0.0%
9	41.8%	39.6%	16.4%	2.2%	0.0%
10	85.1%	12.7%	1.5%	0.7%	0.0%
11	48.5%	29.9%	18.7%	3.0%	0.0%
12	56.0%	36.6%	7.5%	0.0%	0.0%
13	44.8%	44.0%	9.7%	1.5%	0.0%
14	52.2%	29.1%	17.9%	0.7%	0.0%



### 4.3. 概論科目

Q	選項肢 1	選項肢 2	選項肢 3	選項肢 4	選項肢 5
1	97.3%	2.7%	0.0%	0.0%	0.0%
2	71.6%	21.6%	2.7%	4.1%	0.0%
3	70.3%	17.6%	5.4%	5.4%	1.4%
4	71.6%	12.2%	9.5%	5.4%	1.4%
5	70.3%	18.9%	6.8%	2.7%	1.4%
6	62.2%	14.9%	10.8%	8.1%	4.1%
7	60.8%	18.9%	10.8%	8.1%	1.4%
8	75.7%	13.5%	8.1%	2.7%	0.0%
9	63.5%	23.0%	8.1%	2.7%	2.7%
10	75.7%	14.9%	5.4%	4.1%	0.0%
11	71.6%	14.9%	10.8%	2.7%	0.0%
12	67.6%	25.7%	5.4%	1.4%	0.0%
13	62.2%	20.3%	12.2%	5.4%	0.0%
14	67.6%	16.2%	4.1%	9.5%	2.7%

